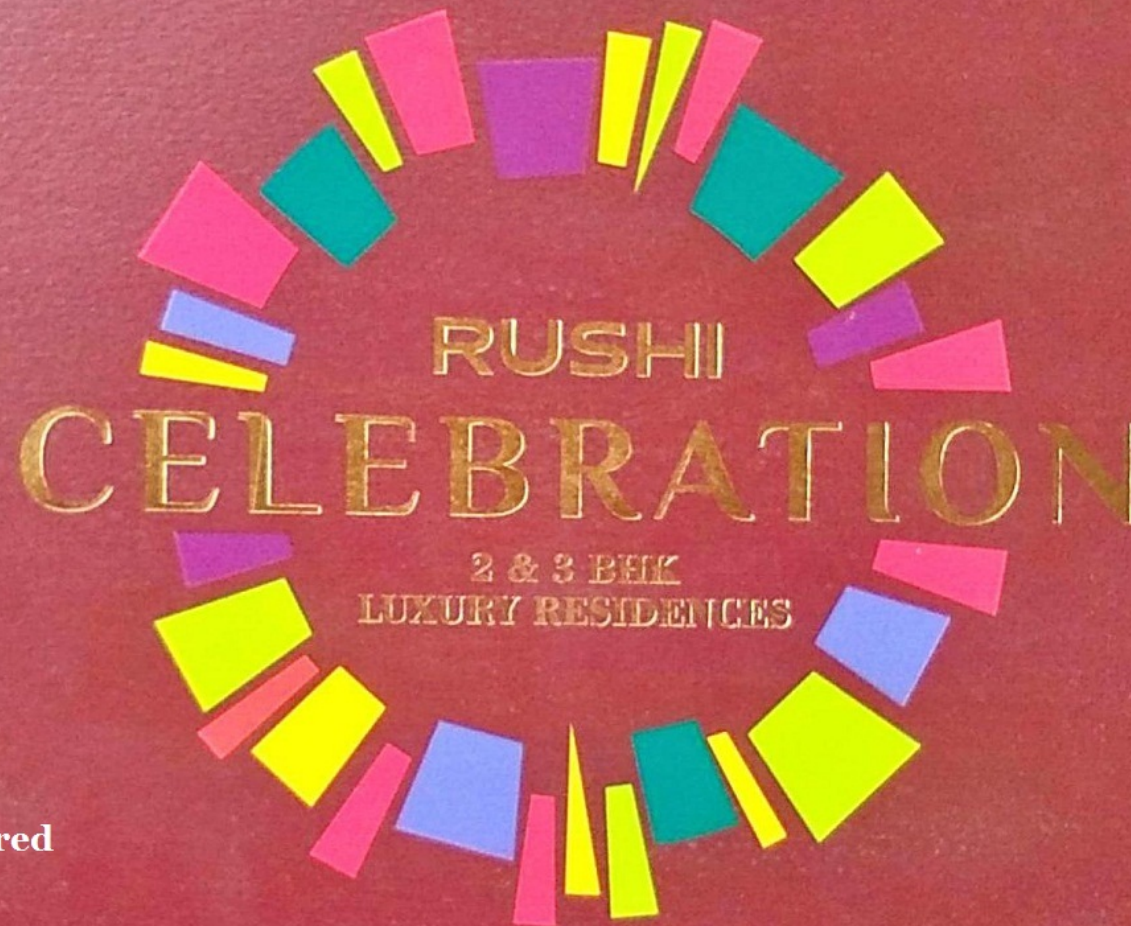


LIFE IS A CELEBRATION



The project has been registered via MahaRERA registration number: P52600010113 and is available on the website <https://maharera.mahaonline.gov.in> under registered projects.

Dadashri Ganpati Chowk, Railway Lines, Solapur



# WELCOME TO THE GRAND CENTRAL LIFESTYLE

AN EXCLUSIVE DEVELOPMENT SET WITHIN A MODERN INTEGRATED COMPLEX.  
RUSHI CONSTRUCTION PRESENTS

## RUSHI CELEBRATION

IN THE HEART OF SOLAPUR.















IT ISN'T JUST A BETTER  
HOME TO LIVE IN.  
IT'S A BETTER LIFE.

WHEN YOU WAKE UP TO WIDE-OPEN SPACES  
ALL AROUND YOU, THERE'S A KIND OF CALM  
THAT CHANGES YOU. WHICH IS WHAT MAKES

**RUSHI CELEBRATION,**

A WORLD IN ITSELF.

WITH SPACIOUS HOMES SURROUNDED  
BY GREENERY & THE FINEST AMENITIES.







**THE  
CENTRAL  
LOCATION**  
AS CONVENIENT  
AS IT GETS

### KEY DISTANCES

RAILWAY STATION - 800 MTRS  
SOLAPUNE - PUNE HIGHWAY - 2.5 KM  
NAVI PETH - 1 KM  
SAAT RASTA CHOWK - 1.7 KM  
BABASAHEB AMBEDKAR CHOWK - 700 MTRS

### SCHOOLS & COLLEGES

ST JOSEPH HIGHSCHOOL - 350 MTRS  
SIDDESHWAR MANDIR - 1.1 KM  
MODERN HIGHSCHOOL - 2.7 KM  
JANA PRABODHINI HIGHSCHOOL - 750 MTRS  
MANGALWEDHEKAR INSTITUTE - 900 MTRS  
LITTLE FLOWER HIGHSCHOOL - 2.6 KM

### THEATRE & SHOPPING

LOKMANGAL SUPER BAZAR - 250 MTR  
D-MART - JULE SOLAPUR - 5 KM  
D-MART - KARAMBA - 2.8 KM  
BHAWAT BIG CINEMAS - 1.3 KM  
E-SQUARE - 1.1KM  
PRABHAT TALKIES - 1.2 KM  
MC'DONALDS - 1.1 KM  
HUTATMA SMRUTI MANDIR - 900 MTRS

### HOSPITALS

VIJAY CLINIC - 720 MTR  
ASHWINI HOSPITAL - 2.1 KM  
RAGHOJI HOSPITAL - 750 MTR  
YASHODHARA HOSPITAL - 1.9 KM

### PETROL PUMP

NAVAL PETROL PUMP - 450 MTRS  
SUPER PETROL PUMP - 700 MTRS

### BANKING

INDIAN BANK - 1 KM  
KARUR VYASYA BANK - 300 MTR  
FEDERAL BANK - 600 MTR  
SBI - 550 MTR  
BANK OF INDIA - 600 MTR  
AXIS BANK - 600 MTR  
BANK OF BARODA - 800 MTR

### HOTELS

HOTEL SAIPRASAD - 400 MTR  
HOTEL CITY PARK - 1 KM  
HOTEL SURYA - 1.5 KM  
HOTEL TRIPURSUNDARI - 2.3 KM  
HOTEL DHRUV - 900 MTR  
HOTEL BALAJI SAROVAR - 6.2 KM

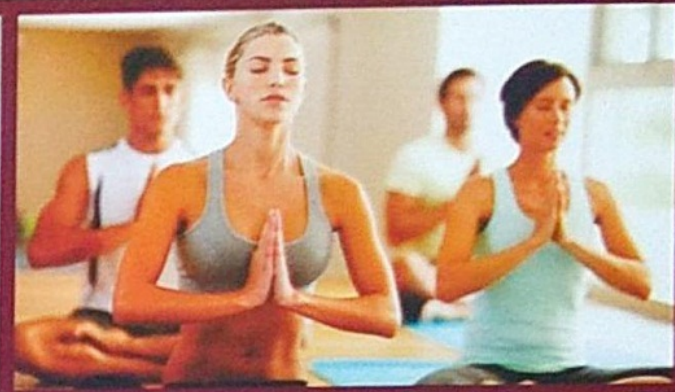




# RUSHI CELEBRATION









# WELL DESIGNED COMMUNITY- FRIENDLY FEATURES



- ELEGANT ENTRANCE GATE WITH SECURITY CABIN.
- SURVEILLANCE SYSTEM AT MAIN ENTRANCE GATE & ALL LOBBIES.
- WATER TREATMENT PLANT.
- AMPLE COVERED AND OPEN PARKING.
- INTERCOM FACILITY.
- WELL DESIGNED ENTRANCE LOBBY.
- 8-PASSENGER ELEVATOR OF OTIS OR EQUIVALENT MAKE.
- POWER BACKUP FOR LIFT AND COMMON LIGHTING.
- GYMNASIUM WITH MODERN EQUIPMENTS.
- YOGA AVENUE.
- LANDSCAPED TERRACE WITH SENIOR CITIZEN SIT OUTS.
- CHILDREN CYCLE TRACK/ WALKING TRACK AT TERRACE.
- RAINWATER HARVESTING FOR GROUND WATER RECHARGE.
- SEPARATE PARKING SPACE FOR VISITORS.
- FIRE FIGHTING SYSTEM.



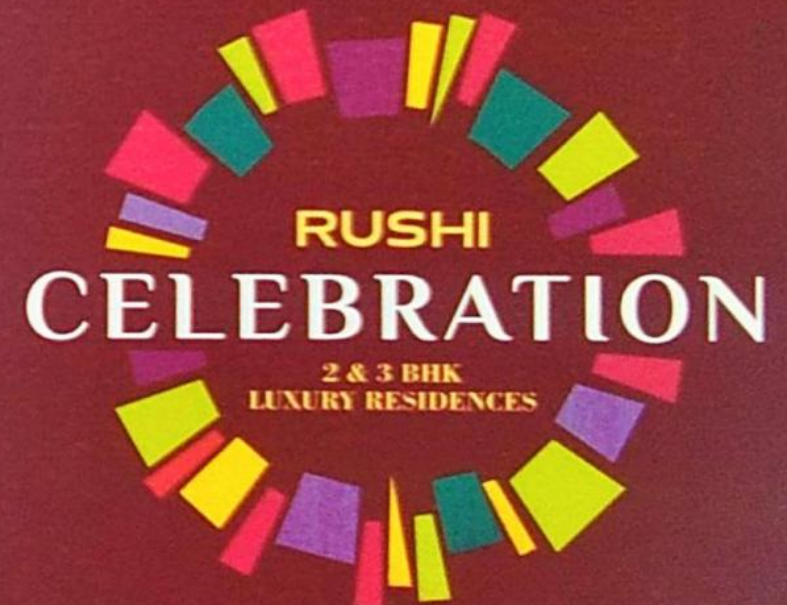








RESIDENCES  
AS PERSONAL  
AS IT GETS..







**EACH FLAT DESIGNED  
AS PER VASTU SHAstra**

**3 RESIDENCES PER FLOOR**

**ABUNDANT NATURAL LIGHT AND  
BREEZE IN ENTIRE FLATS**

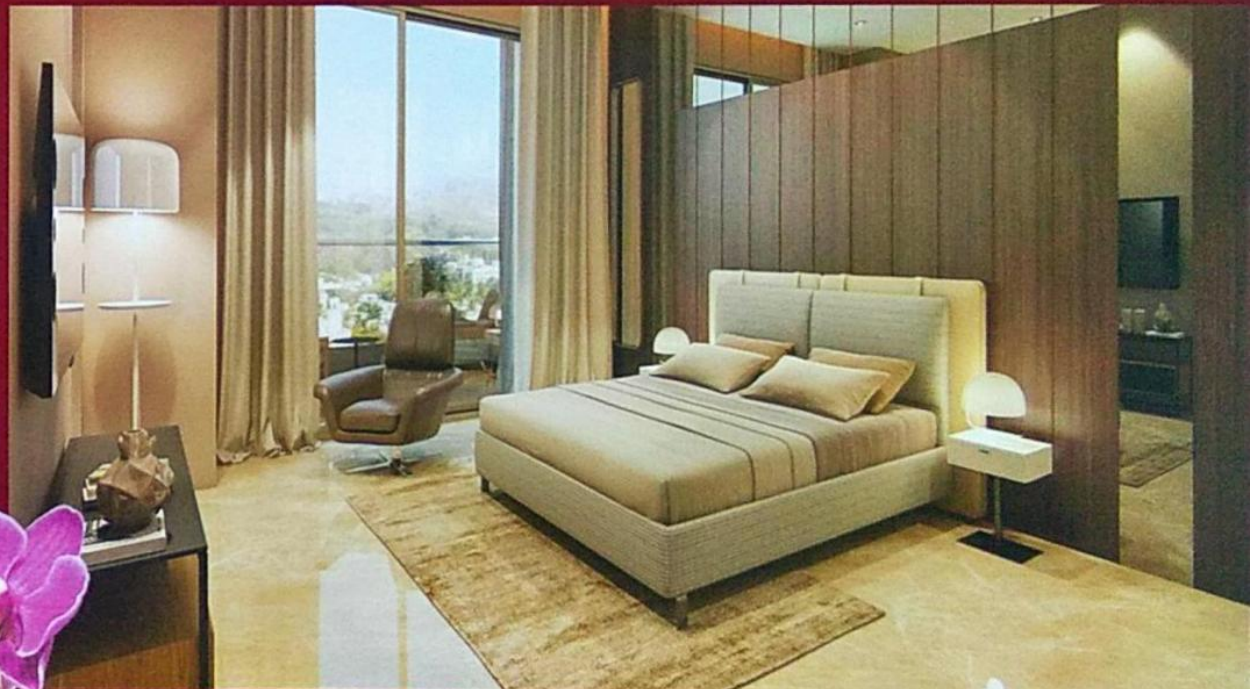






**LARGE FRENCH WINDOWS  
IN BEDROOMS FOR WIDE VIEWS**

**PROPER SPACE UTILIZATION**

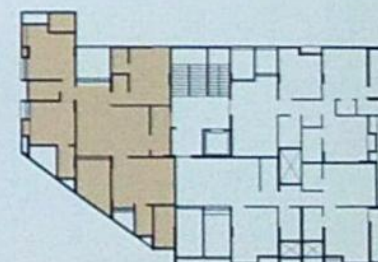




# 3 BHK



TYPE	FLAT NO.	SALEBLE SQ.FT.
3 BHK	101, 301, 501, 701	1705.14
3 BHK	201, 401, 601	1666.80





# 2 BHK



TYPE	FLAT NO.	SALEBLE SQ.FT.
2 BHK	102, 302, 502, 702	1225.26
2 BHK	202, 402, 602	1206.35





# 2 BHK

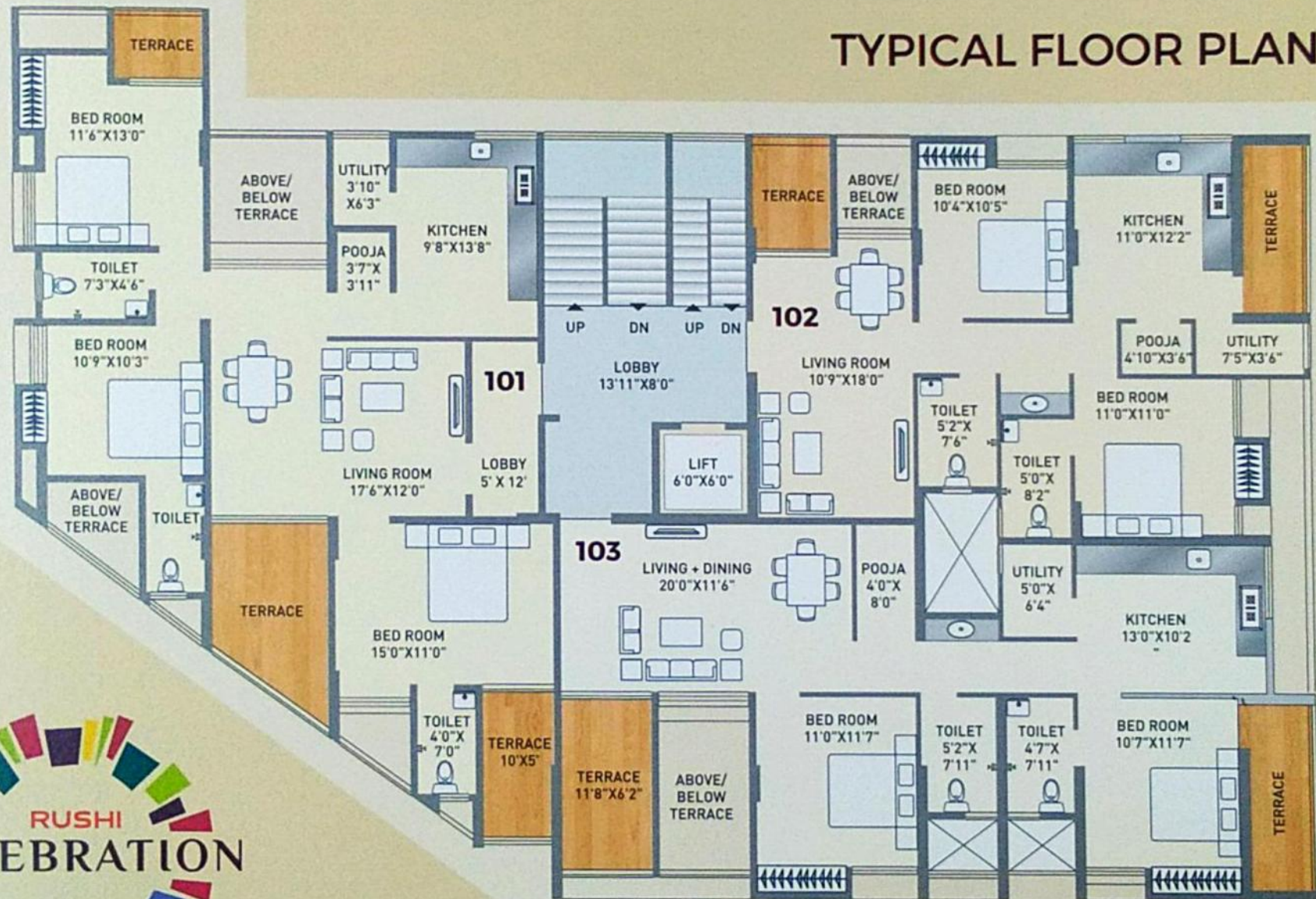


TYPE	FLAT NO.	SALEBLE SQ.FT.
2 BHK	103, 303, 503, 703	1368.32
2 BHK	203, 403, 603	1342.63





# TYPICAL FLOOR PLAN







## LUXURY IN EVERY SINGLE DETAIL

AT RUSHI CELEBRATION,  
COMFORT MEETS LUXURY IN HOMES  
THAT HAVE BEEN BUILT WITH SUPERIOR  
QUALITY AND PLANNING,  
WITH KEEN ATTENTION TO DETAIL.

### RCC

- Earthquake-resistant RCC structure.

### Brickwork

- External wall 6" thick red brick.
- Internal wall 4" thick red brick.

### Plaster

- External walls: Double coat sand-faced plaster.
- Internal walls: Gypsum finish for all internal walls.

### Painting

- Internal walls: Luster Paint.
- External walls: Apex Paint.

### Flooring

- Branded twin charged vitrified tiles in living, dining, passage, bedrooms & lobby - Johnson or equivalent.
- Anti-skid designer tiles in toilets and terrace.

### Plumbing

- Concealed PEX piping plumbing in entire flat.

### Windows

- UPVC / aluminium powder coated sliding windows, MS safety grill with mosquito nets.

### Doors

- Fully Teakwood Melamine-polished, decorative, moulded main door with wooden door frame, exclusive fitting and night latch.
- Internal Doors - Skin Moulded door shutters with Granite door frames and spray print finish.
- Granite door frames and waterproof door for toilets.
- Three track UPVC / aluminium doors for terraces.

### Kitchen

- Granite kitchen platform with stainless steel sink.
- Designer dado tiles above kitchen otta.
- Provision for drinking water purification unit.
- Electrical and Plumbing provision for washing machine, dish washer, etc. in dry balcony.

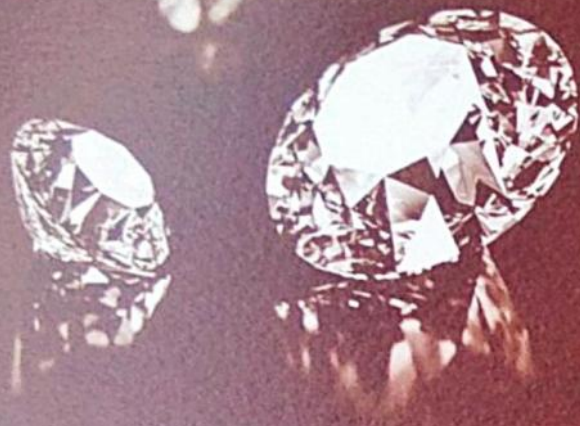
### Toilets

- Sanitary wares - Jaquar or equivalent.
- Walls : Glazed tiles up to full wall .
- Frames: Granite door frames.
- CP fittings : Jaquar or equivalent in all the toilets.
- For shaft hot water supply KITECH (Composite) piping.

### Electrical Fittings

- Concealed copper wiring with adequate points
- All modular switches of Legrand / equivalent make
- Provision for exhaust fan in kitchen and toilets.
- Provision for television, telephone.





## RARE IS RICH

### Automation

- Video door phone facility at main door.
- Access control for main lobby door.
- Intercom System for flat to flat to security office.

### Water Supply

- Water treatment plant unit for borewell water.

### Air Conditioning system

- Provision for internal and external AC units - Ready-To-Install.







Call : 9890865399, 9325042862

### **CREDITS**

Project Architect  
Ar. Vishwambhar Mamdya  
Ar. Vinod Savalgi & Associates

RCC Consultant  
Jitendra Bagalkoti

Legal Advisor  
Adv. P. L. Deshmukh

### **OFFICE ADDRESS**

1159, New Paccha Peth, Near Old WIT College, Solapur  
Phone : 0217 - 2652079, 2656790  
Email - rushiconstruction999@gmail.com

### **SITE ADDRESS**

Rushi Celebration,  
Survey No.8297A/4/1, Dadashri Ganpati Chowk,  
Near Hotel Vikram Palace, Railway Lines, Solapur

DESIGNED & PRINTED BY PORE BROS 98500 97500

Disclaimer : The information contained in this brochure is indicative to the approval of competent authorities. It is not a legal document and does not constitute a part of a contract. The developer reserves the right to alter, add or delete any details / specifications / layout / floor plan / elevation / amenities / facilities in its endeavour to make improvements as and when required. All images and contents is a graphical representation. All furniture / accessories shown are indicative. Terms and conditions as applicable.