

Member of  
**CREDAI**  
SANGLI

महारेसा नोंदणी क्र. P53100022669



जेव्हा सर्व काही  
उत्तम जमून येतं  
तेव्हा साकारतो  
असा सुंदर गृहप्रकल्प..!

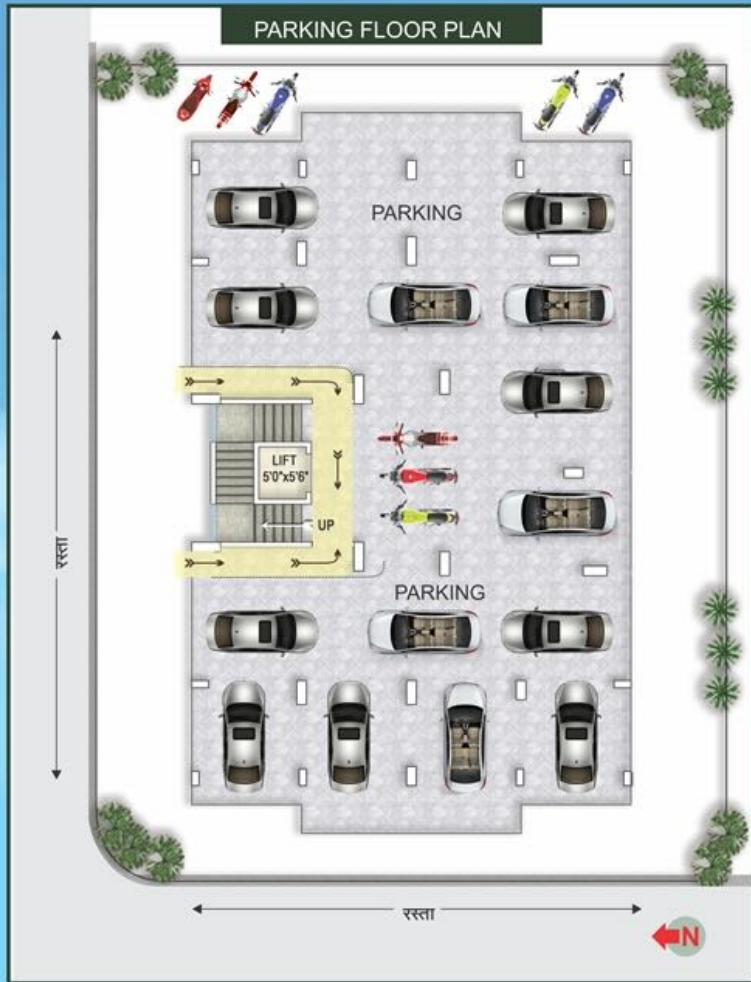
**1 BHK**  
**2 BHK**  
**LUXURIOUS**  
**FLATS AVAILABLE**



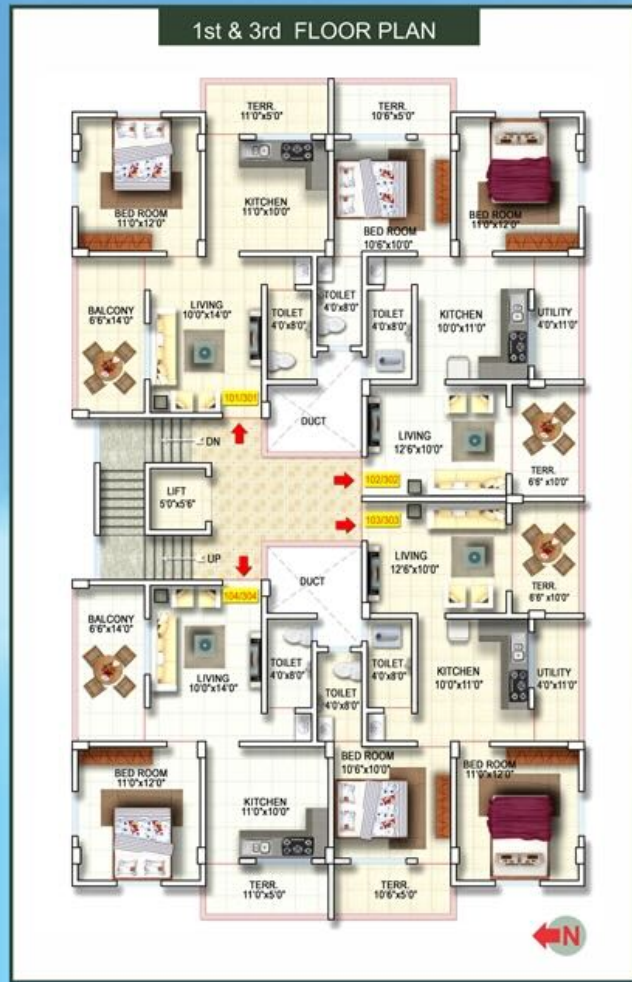
बिल्डर्स अँड डेव्हलपर्स  
**रमेश मासाल**  
विश्रामबाग चौक, सांगली.



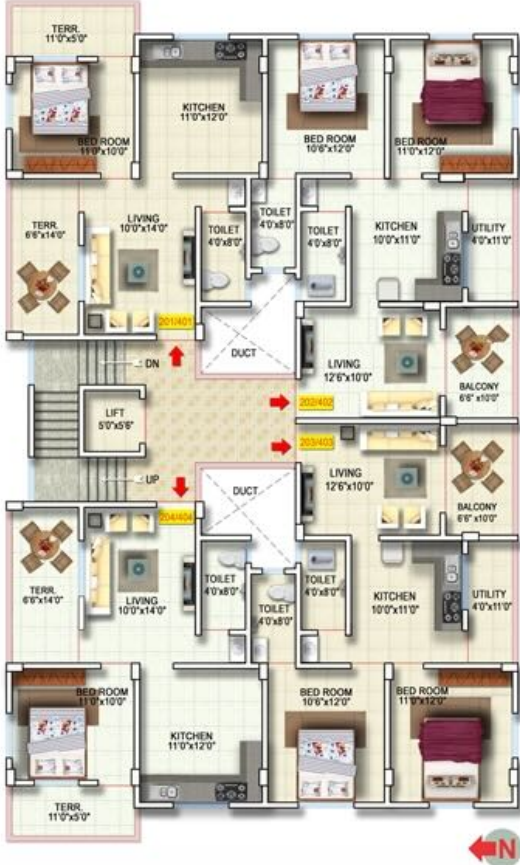
### PARKING FLOOR PLAN



### 1st & 3rd FLOOR PLAN



## 2nd & 4th FLOOR PLAN



FLOOR	FLOOR TYPE	FLAT NO.	B.UP AREA Sq.M.	S. B.UP AREA Sq.ft.
1st & 3rd FLOOR	1BHK	101 & 301	41.15	730
	2BHK	102 & 302	50.93	905
	2BHK	103 & 303	50.93	905
	1BHK	104 & 304	41.15	730
2nd & 4th FLOOR	1BHK	201 & 401	41.15	725
	2BHK	202 & 402	50.93	870
	2BHK	203 & 403	50.93	870
	1BHK	204 & 404	41.15	725

### प्रकल्पाची वैशिष्ट्ये

- ▶ वास्तुशास्त्रानुसार गृह प्रकल्प
- ▶ सुरक्षित, हवेशीर उच्चभ्रु वसाहतीमध्ये प्रकल्प
- ▶ महापुरापासुन सुरक्षित ठिकाण
- ▶ पंतप्रधान आवास योजने अंतर्गत सबसिडी उपलब्ध
- ▶ प्रकल्पाशेजारी खुली जागा
- ▶ बँक फायनान्स उपलब्ध
- ▶ शैक्षणिक संस्था, हॉस्पिटल जवळ
- ▶ प्रशस्त चारचाकी पार्किंगची सोय
- ▶ बँक-अपसह लिफ्टची सोय
- ▶ महानगरपालिका आणि बोअरच्या पाण्याची सोय

### साईट पता

'श्री'नगर कॉलनी, सांगलीकर मळा, मिरज. सांगली.

### आमचे पूर्ण, यशस्वी प्रकल्प



#### आम्रपाली रेसिडेन्सी

आकाशवाणी  
केन्द्रासमोर,  
विलारगेनगर,  
सांगली.



#### बालाजी कॉर्नर

कुपवाड रोड,  
पेटोल चंका शेजारी,  
बासजीनगर,  
सांगली.



#### मल्हार रेसिडेन्सी

शिंतापनगर कॉर्नर  
कॉलेज शेजारी,  
कुपवाडी बघादन,  
विश्वाम्बाग, सांगली.



#### नर्मदा रेसिडेन्सी

विजयनगर, कुपवाड रोड,  
हनुमान मंदीराच्या पूर्वेस,  
विनायकनगर, सांगली.



महापुरापासून सुरक्षित ठिकाण



सुरक्षित, हवेशीर शांत परिसर



जवळच शैक्षणिक सुकल



जवळच बाजारपेठ

## SITE LOCATION



## BOOKING CONTACT

### रमेश मासाळ

पारिजात अपार्टमेंट विश्रामबाग चौक, सांगली.

**9822020250 / 7798202801**

Email : rameshrmasal@gmail.com  
www.rameshmasal.com

## LUXURIOUS SPECIFICATION

### STRUCTURE

R.C.C.

### BRICK WORK

6" Thick External & 4" Thick Internal B. B. /Fly ash Masonry Walls.

### PLASTER

Internal Neeru Finish Plaster and External Sand Faced in C. M.

### WASH BASIN

One White Wash basin.

### ENTRANCE DOOR

Main door frame in Sagwan wood, Bedroom door frame in Granite, Balcony & other door frame will be in RCC with waterproof plywood shutters. Toilet door frame in RCC / Kadappa with PVC shutters.

### WINDOW

Powder coated 3-track sliding Windows & Grill externally.

### FLOORING

Vitrified flooring of size 2'x2'for Flat.

### ELECTRIFICATION

Concealed Electric Fitting Light points : 4 point for living room, 3 point in kitchen & bedroom, 1 point for each Toilets, Balcony & 1 call bell, 1 Power point in Toilets and Kitchen.

### W.C.

23" Orisa pan white colour with flush cock type flushing system including white glazed tile flooring with 3' height dodo for wall.

### COLOUR

Oil bond colour for all internal wall and oil paint for door & windows  
White wash for ceiling, External walls approved quality cement paint.

### TOILET

7' height, colour glazed tiles including necessary One water tank trap connection & ceiling type shower. commod / 23" Orisa pan with colour with flush cock type flushing system.

### PLUMBING

PVC Fitting with inner APVC / CPVC & SWR for outer.

## COMMON FACILITIES

### COMMON LIGHT

For staircase & outside the building wherever necessary at the direction of the promoter.

### ROOF, SLAB, TOP FINISHING

Top slab with necessary water proofing.

### WATER TANK

One overhead water tank shall be provided with connection to all flats. (One bore well with pump-set)

### NOTE :

1. The above side specification are general & will be provided in the commercial accommodation as suitable in accommodation as per the discretion of the promoter.  
2. Any additional / alteration in specification or work will be changed extra. No rebate will be given for cancellation / omission of any item/walls.  
This Brochure is purely conceptual & not a legal offering no are will be part of the agreement. Number of shop/office/unit may be revised, promoters reserve the right to amend the layout, plans, elevation, designs, specification, amenities etc. without notice.

Architect & Engineer <b>DATTATRAY MHETRE</b>
Structural Design <b>NANDKUMAR BANE</b>
Chartered Accountant <b>RAMESH JOSHI</b>
Legal Advisor <b>GIRISH JOSHI</b>