



Sai Estate

निसर्गसंपन्न वास्तुवैभवाचं स्वप्न...साई इस्टेट !

SHOPS

2 BHK
TERRACE FLATS

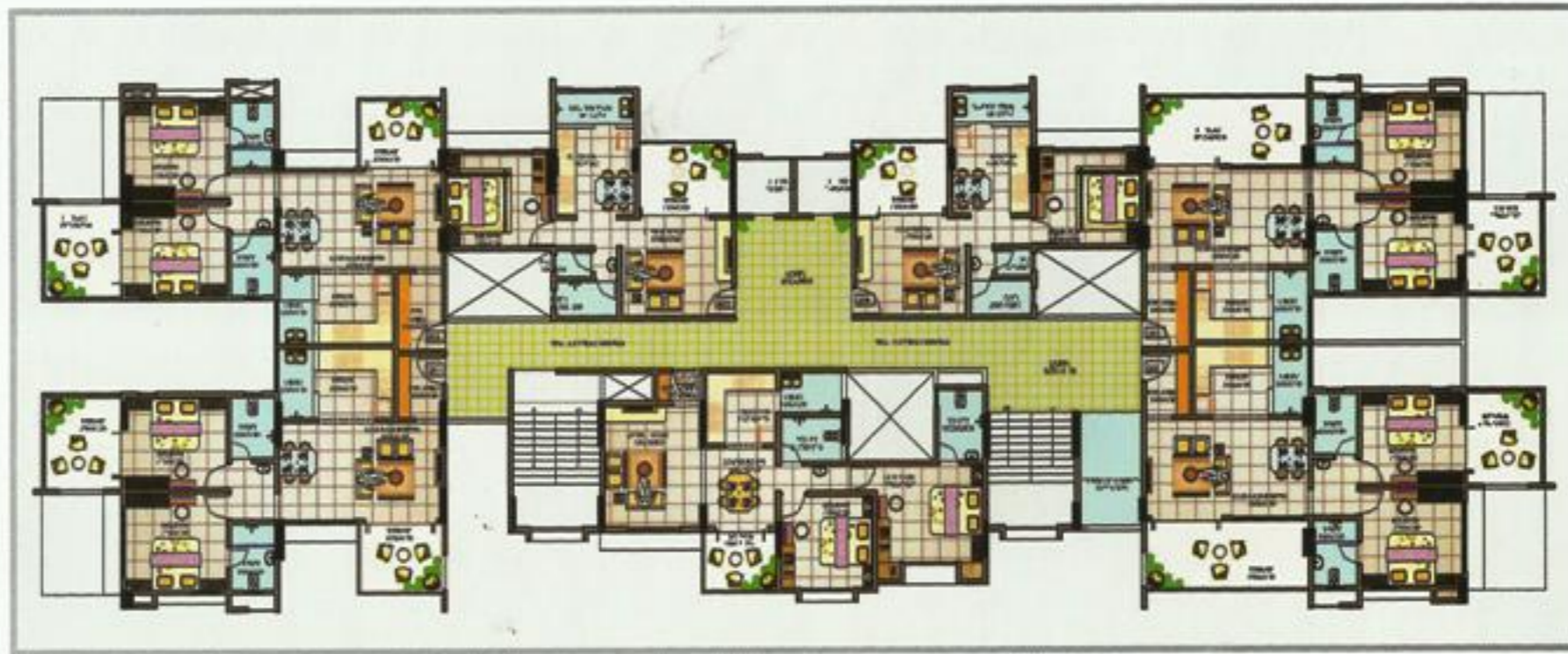
COMMERCIAL
OFFICES

निसर्गसंपन्न वास्तुवैभवाचं स्वप्न...साई इस्टेट !



Typical Area Statement

TYPE	AREA Sq.Ft.	Offices	Commercial Place
2BHK	940 to 1350	360 to 750	2304



Typical Floor Plan

Booking Contact :

- Shrikant
95274 75300
- Mahesh
98220 47524



लिट वेली वीकअप



सौर ऊर्जेद्वारे २४ तास गरम पाणी व कॉमन लाईट



आधुनिक उपकरणांसह फिट तुम्हाला हंदेलत ठेवण्यासाठी...

COMMON FACILITIES :

- One Lift - Well known Company with UPS Backup
- Solar - 24 hours hot water and Common lighting.
- Total Campus will Green, Healthy and Clean.
- Security - CCTV Camera for entire Project Area.
- Drink Water - Aquaguard U.V. System water
- Attractive Entrance Gate with Compound Wall.



संपूर्ण कुटुंबाच्या सुविधांसाठी आधुनिक विद्युतीची सुविधा



घराबाहेर खेळाण्यासाठी / घराबाहेर फिरण्यासाठी योग्य ठिकाण



Site :
R.S. No. 843, 'A' ward, Near Suryakant Mangal Karyalaya, Kalamba Road, Kolhapur.

Office :
1264, B ward, Radha-Govind Plaza, Opp. Daivadnya Boarding, Mangalwar Peth, Kolhapur. Ph. (0231) 2624188.
Email : jay.constructions@rediffmail.com Website : www.jayconstructions.in



निसर्गसंपन्न वास्तुवैभवाचं स्वप्न...साई इस्टेट !